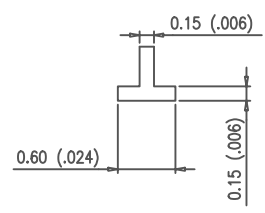


- NOTES:
1. ALL EXPOSED METAL AND METALLIZED AREAS SHALL BE GOLD PLATED 1.5 μm(60 μ") MIN. THICKNESS OVER NICKEL PLATE.
 2. SEAL AREA AND DIE ATTACH PAD SHALL BE ISOLATED FROM ANY LEADS. (ZERO GROUND.)
 3. * INDICATES DIMENSIONS OF THE TOP SURFACE.



MODIFICATIONS	DATE	DRAWN	CHECKED	APPROVED
CHANGE				

NAME	16 LEAD S.O.PACKAGE
SCALE	10/1
MATERIAL	KYOCERA A-440

TOLERANCES: UNLESS OTHERWISE SPECIFIED	± 0.13 (± .005)
THIRD ANGLE PROJECTION	

FPI-16-41			
DRAWN	CHECKED	APPROVED	DATE
S.M	UE	K.H	M.S
DRAWING NO.			SHEET
PB-F88151			1/1



KYOCERA CORPORATION
KYOTO JAPAN