

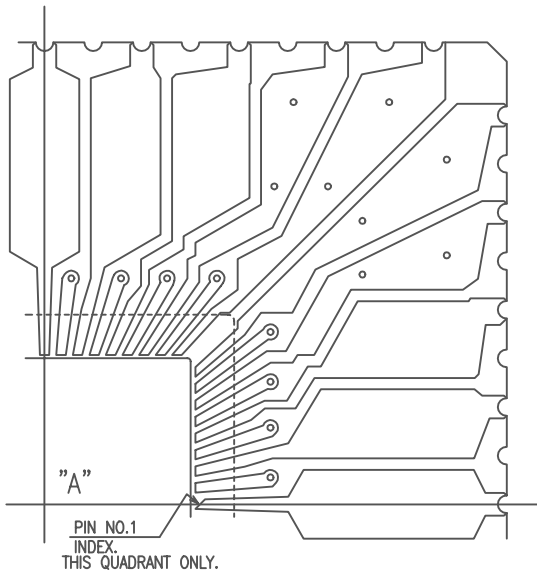
NOTES;

1. ALL EXPOSED METALLIZED AREA SHALL BE GOLD PLATED 60 MICRO INCHES MIN. THK. OVER NICKEL PLATE UNLESS OTHERWISE SPECIFIED IN PURCHASE ORDER.
2. FLATNESS PERTAINS TO METALLIZED PADS ONLY.
3. SEAL AREA AND DIE ATTACH AREA SHALL BE ISOLATED FROM ANY LEADS. (ZERO GROUND)
4. LEAD RESISTANCE : 0.18 OHMS. MAX..

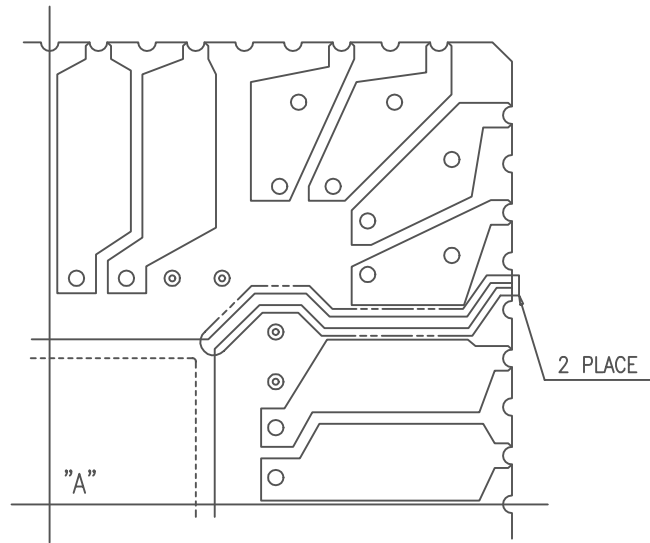
5.

PART No.	KC NAME	METALLIZATION	
		SEAL RING	DIE ATTACH
01	IEB-68CZ	WITH	WITH
02		WITHOUT	WITHOUT

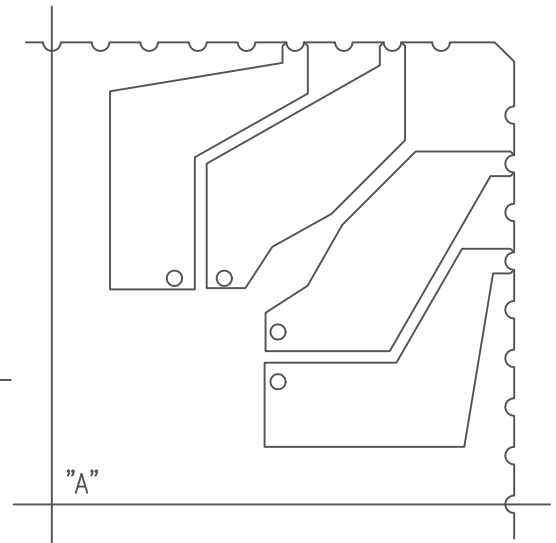
						NAME 68 LCC (.300 SQ. CAV.)		TOLERANCES: UNLESS OTHERWISE SPECIFIED ± .005 THIRD ANGLE PROJECTION		DRAWN S.I.	CHECKED T.J.	APPROVED T.O.	DATE 11-28-'87
MODIFICATIONS		7-9-'88 Y.M.		T.I.		Y.S.		MATERIAL KYOCERA A-440				DRAWING NO. PB-C87671-B	
CHANGED ; TOLERANCE		DATE		DRAWN		CHECKED		KYOCERA CORPORATION KYOTO JAPAN				SHEET 1/2	
CHANGED ; TOLERANCE		1-21-'88		T.I.		H.I.							
CHANGE													



2PA PATTERN



3PA PATTERN



4PA PATTERN

NOTE;

THIS DWG .SHOWS ONLY TOP RIGHT QUADRANT OF THE WHOLE PATTERN
AND THREE(3) OTHER QUADRANTS ARE SYMMETRICAL WITH RESPECT TO POINT "A".

MODIFICATIONS						NAME	68 LCC (.300 SQ. CAV.)	TOLERANCES:	DRAWN	CHECKED	APPROVED	DATE
						SCALE	10 / 1	UNLESS OTHERWISE SPECIFIED	T.I	H.U		1-21-'88
						MATERIAL		THIRD ANGLE PROJECTION				
	CHANGE	DATE	DRAWN	CHECKED	APPROVED		KYOCERA CORPORATION KYOTO JAPAN		DRAWING NO.	PB-C87671-B		SHEET 2/2