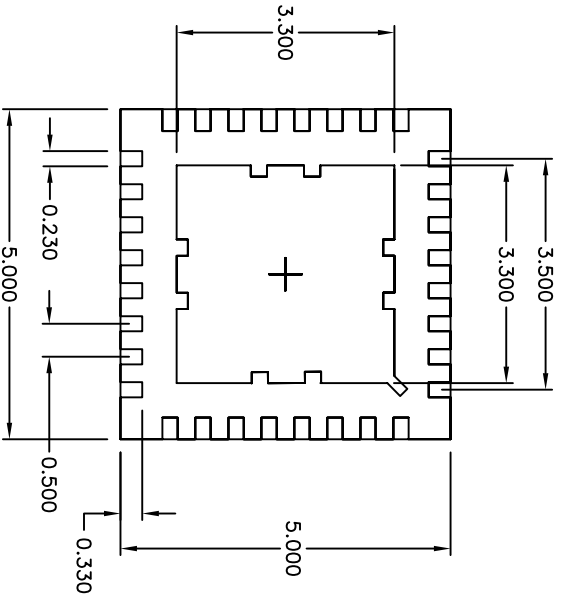
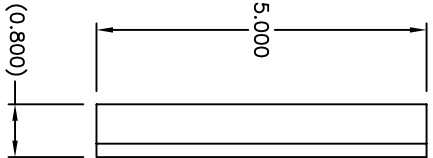
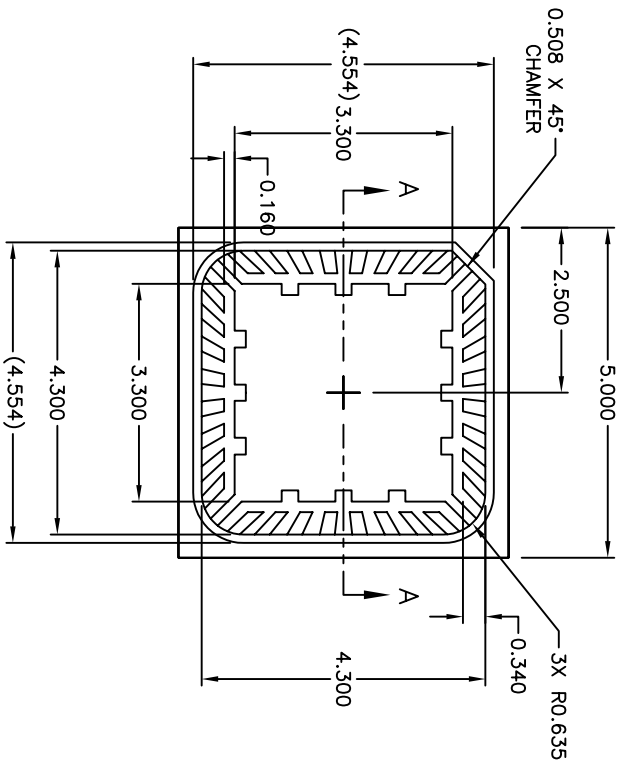


2

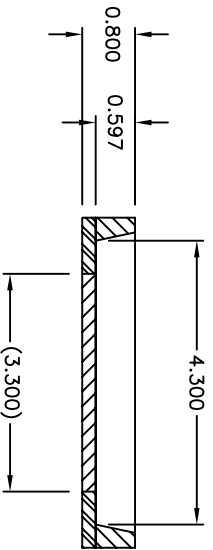
1

SEMPAK REVISIONS			APPROVED
ECON NO.	DATE	DESCRIPTION	D.MORRIS
10760	10/12/06	PRODUCTION RELEASE	



TOP VIEW

BOTTOM VIEW



SECTION A-A

- NOTES:
1. BODY: PLASTIC, SEMICONDUCTOR GRADE.
 2. LEAD FRAME: COPPER, 194 FH.
 3. LEAD FINISH: FULL GOLD PLATE.
 4. LEAD THICKNESS: 0.2030 ±.0076.
 5. DIE PAD: 3.300mm X 3.300mm.
 6. DIE PAD: 3.300mm X 3.300mm.
 7. JEDEC OUTLINE: MO-220 (VHHD-4).



THIRD ANGLE PROJECTION

UNLESS OTHERWISE SPECIFIED DIMENSIONS ARE IN MILLIMETERS TOLERANCES ARE: X.XXX ± 0.015 X.XXXX ± .1°

DO NOT SCALE DRAWING

DRAWN BY	C. CRUZ	DATE	10/12/06
APP BY	P. FLASKERUD	DATE	10/12/06
CUSTOMER	---		

THIS DOCUMENT CONTAINS INFORMATION PROPRIETARY TO SEMPAK, INC., AND REPRODUCTION OR ISSUE IN ANY FORM IS NOT PERMITTED WITHOUT WRITTEN AUTHORITY FROM SEMPAK, INC.

SEMPAC, INC.
 Open-Pak™ Technologies
 www.sempac.com
 568 E. WEDDELL DRIVE, SUITE 5
 SUNNYVALE, CALIFORNIA 94089
 PHONE: (408) 400-9002 FAX: (408) 400-9006

SIZE	PART NO.	REV
A	MLP5X5-32-OP-01	2
SCALE	FILE	SHEET
NONE	MLP5X5-32-OP-01-R2.DWG	1 OF 1

2

1